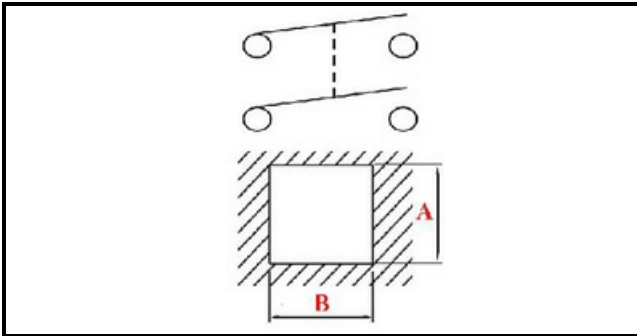


1105036

BIPOLAR SWITCH ON/OFF

Date: 22-11-2024

**Technical data**

DIAMETER mm	Ø=26mm
NUMBER OF POLES	POLI/POLES=4
NUMBER OF POSITIONS	0-1
COLOR	ROSSO/RED
VOLT	230V
COLOR	VERDE/GREEN