

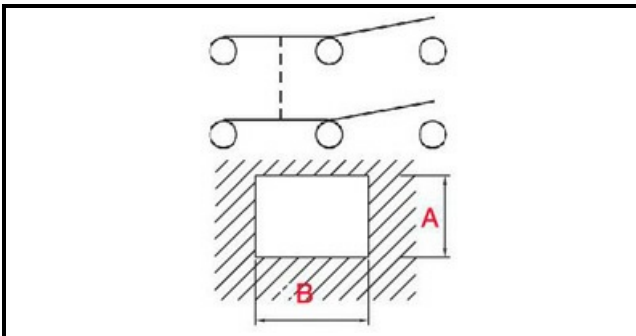
1105320

# OVERCURRENT PROTECTOR SWITCH

Date: 22-11-2024

ORIGINAL  
**OSP**  
SPARE PARTS

## Technical data



DEPTH MM	B=36mm
WIDTH MM	A=34mm
NUMBER OF POLES	POLI/POLES=6
NUMBER OF POSITIONS	0-1
COLOR	BIANCO/WHITE
VOLT	15V

## Manufacturer code

DITTING MASCHINEN AG