

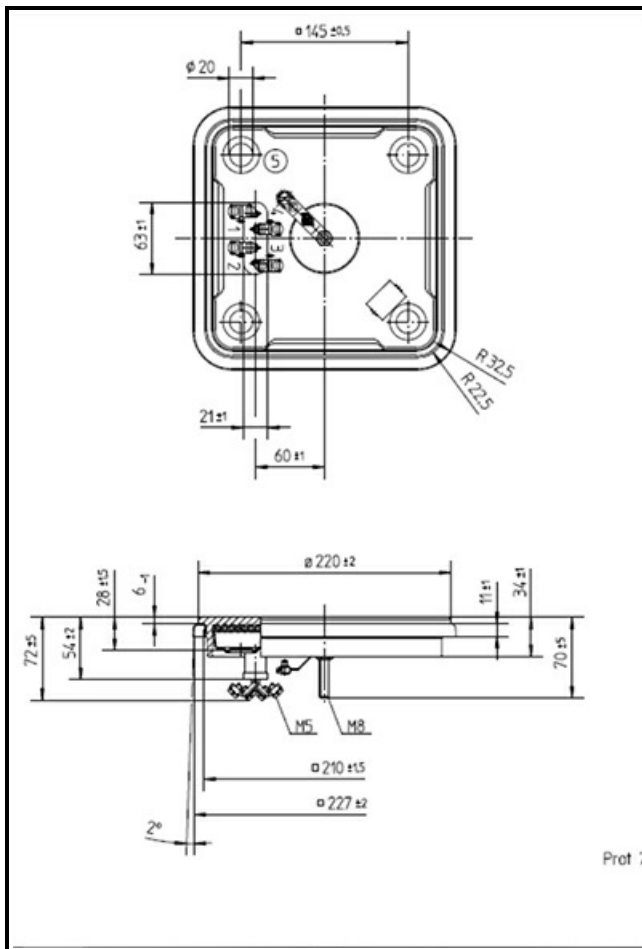
1101895

HOT PLATE 220x220mm 2000 W 400 V

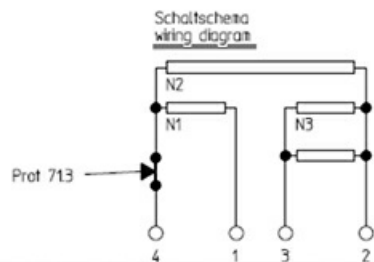
Date: 15-11-2024



Technical data



DEPTH MM	A=220mm
WIDTH MM	B=220mm
KILOWATT KW	KW=2
WATT	WATT=2000
THREE PHASE	TRIFASE/THREEPHASE
DRY HEATING ELEMENT	SECCO/DRY



Manufacturer code

E.G.O. ELEKTRO GERATE AG

E.G.O. ELEKTRO GERATE AG
