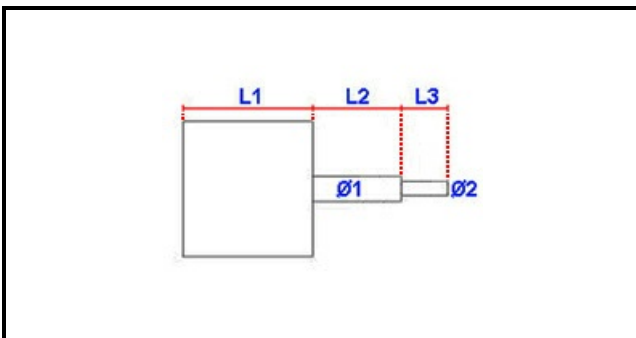


1103242

MOTOR 0,045KW O,0765

Date: 27-01-2025

**Technical data**

MOTOR LENGHT mm	L1=90mm
SHAFT LENGHT 1 mm	L2=40mm
SHAFT LENGHT 2 mm	L3=19mm
SHAFT DIAMETER mm	Ø1=10mm
KILOWATT KW	KW=0,045
MONOPHASE	230V
SHAFT DIAMETER 2 mm	Ø2=7X8mm

Manufacturer code

ANGELO PO GRANDI CUCINE SPA

NIDEC FIR INTERNATIONAL SRL