

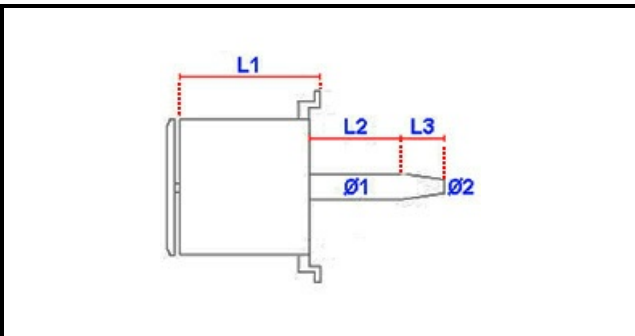
1103939

# FAN MOTOR 0,25KW 230V 2600rpm 1 SPEED

Date: 15-11-2024



## Technical data



MOTOR LENGHT mm	L1=100mm
SHAFT LENGHT 1 mm	L2=37mm
SHAFT LENGHT 2 mm	L3=25mm
SHAFT DIAMETER mm	Ø1=12mm
HP - POWER	HP=0,33
KILOWATT KW	KW=0,25
MONOPHASE	230V
SHAFT DIAMETER 2 mm	Ø2=9mm

## Manufacturer code

INOXTREND S.R.L.

INOXTREND S.R.L.