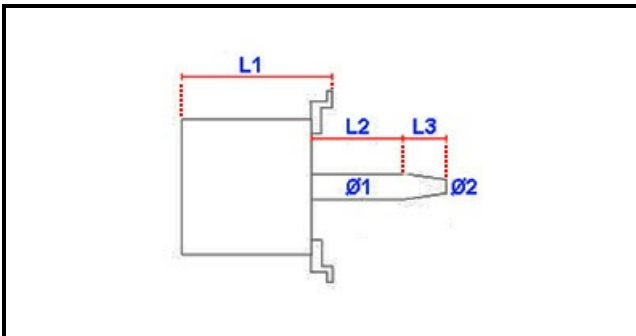


1103985

**MOTOR 4/6P; 350W; 230V 50-60HZ**

Date: 15-11-2024

ORIGINAL  
**OSP**  
SPARE PARTS**Technical data**

MOTOR LENGHT mm	L1=167mm
SHAFT LENGHT 1 mm	L2=91mm
SHAFT LENGHT 2 mm	L3=35mm
SHAFT DIAMETER mm	Ø1=16mm
KILOWATT KW	KW=0,35
MONOPHASE	230V
SHAFT DIAMETER 2 mm	Ø2=10mm

**Manufacturer code**

ELECTROLUX PROFESSIONAL S.P.A.