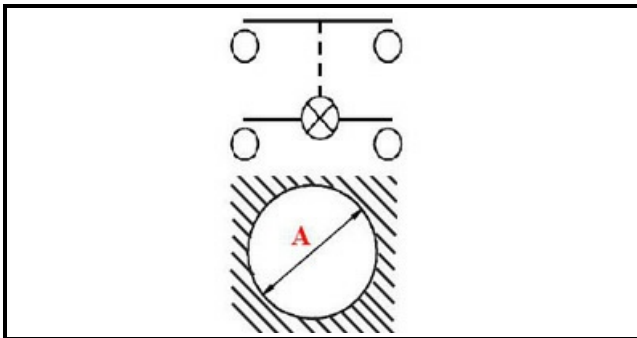


1108215

PUSH BOTTON

Date: 27-01-2025

ORIGINAL
OSP
SPARE PARTS**Technical data**

DIAMETER mm	Ø=24mm
MONOPHASE	VOLT=230
NUMBER OF POLES	POLES=4
LAMP TYPE	ROSSO/RED
FASTON MM	6,3mm

Manufacturer code

GICO SPA