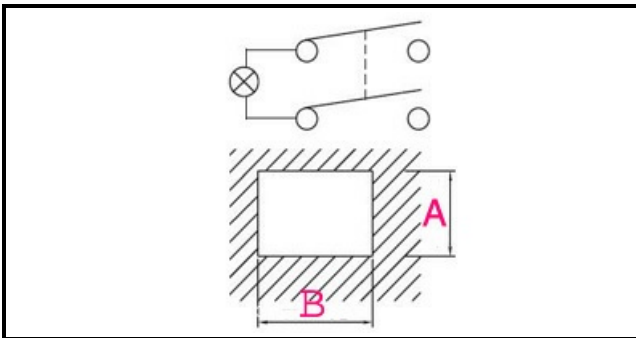


1105256

**BIPOLAR SWITCH**

Date: 15-11-2024

ORIGINAL  
**OSP**  
SPARE PARTS**Technical data**

DEPTH MM	B=51mm
WIDTH MM	A=25mm
NUMBER OF POLES	POLI/POLES=4
NUMBER OF POSITIONS	0-1
COLOR	NERO CON LED/BLACK WITH LED
VOLT	250V

**Manufacturer code**

MBM- EUROTEC SRL -
MIGEL S.R.L.
SCOTSMAN ICE Srl.
Gruppo Cimbali S.p.A.
BAR LINE DIV. DELLA FRIMONT SPA
MIGEL S.R.L.