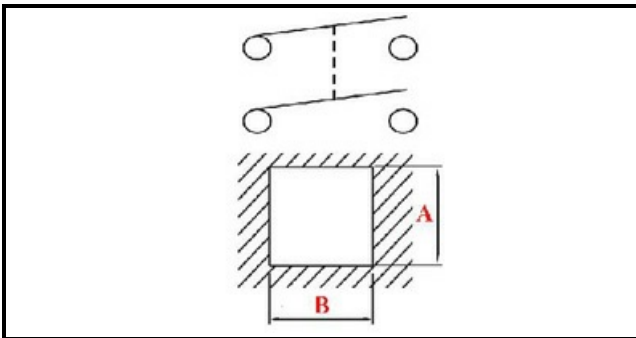


1105443

**GREEN SWITCH**

Date: 22-12-2024

ORIGINAL  
**OSP**  
SPARE PARTS**Technical data**

DEPTH MM	B=25mm
WIDTH MM	A=25mm
NUMBER OF POLES	POLI/POLES=4
NUMBER OF POSITIONS	0-1
COLOR	VERDE/GREEN
VOLT	230V
DEPTH MM	B cornice=35mm
WIDTH MM	A cornice=35mm

**Manufacturer code**

ELECTROLUX PROFESSIONAL S.P.A.