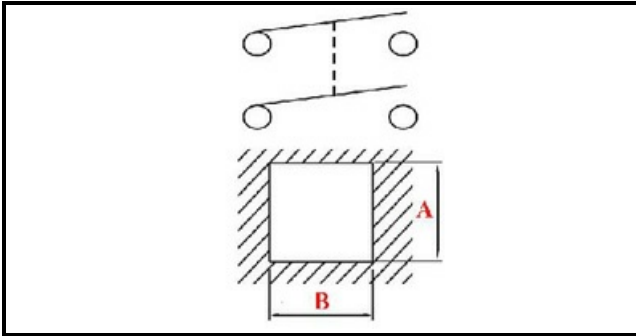


1105005

**ON/OFF SWITCH SAB**

Date: 27-01-2025

ORIGINAL  
**OSP**  
SPARE PARTS**Technical data**

DEPTH MM	B=26mm
WIDTH MM	A=26mm
NUMBER OF POLES	POLI/POLES=4
NUMBER OF POSITIONS	0-1
COLOR	ROSSO/RED
VOLT	230V
COLOR	VERDE/GREEN

**Manufacturer code**

FABA SRL
Gruppo Cimbali S.p.A.
S.V. ITALIA SRL
Gruppo Cimbali S.p.A.