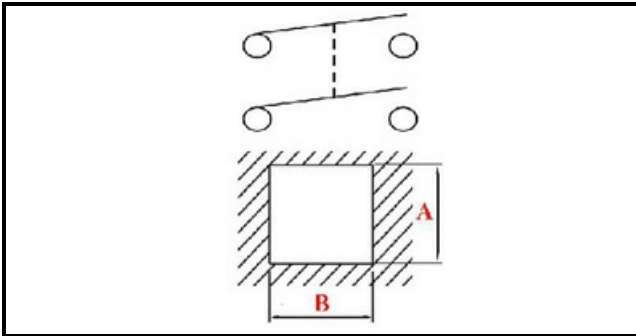


1105036

**BIPOLAR SWITCH ON/OFF**

Date: 27-02-2025

**Technical data**

DIAMETER mm	Ø=26mm
NUMBER OF POLES	POLI/POLES=4
NUMBER OF POSITIONS	0-1
COLOR	ROSSO/RED
VOLT	230V
COLOR	VERDE/GREEN