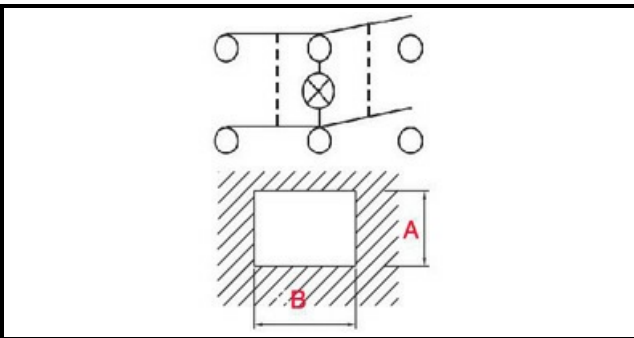


1105335

GREEN SWITCH MOD 62P 24V

Date: 04-03-2025

ORIGINAL
OSP
SPARE PARTS**Technical data**

DEPTH MM	B=30mm
WIDTH MM	A=22mm
NUMBER OF POLES	POLI/POLES=6
NUMBER OF POSITIONS	0-1
COLOR	VERDE/GREEN
VOLT	24V

Manufacturer code

OMNIWASH GROUP SRL