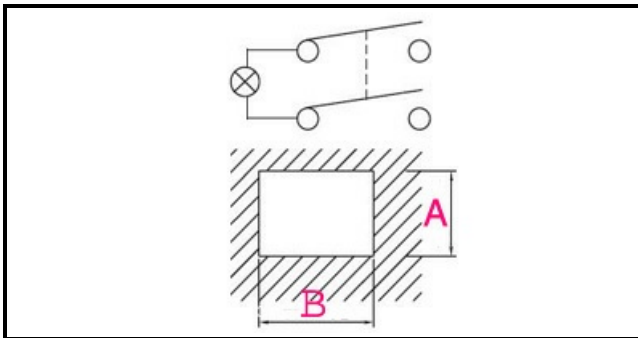


1105459

**GENERAL SWITCH ONE OR**

Date: 23-11-2024

ORIGINAL  
**OSP**  
SPARE PARTS**Technical data**

DEPTH MM	B=20mm
WIDTH MM	A=13mm
NUMBER OF POLES	POLI/POLES=4
NUMBER OF POSITIONS	0-1
COLOR	ROSSO/RED
VOLT	250

**Manufacturer code**

RANCILIO GROUP SPA CON SOCIO UNICO