

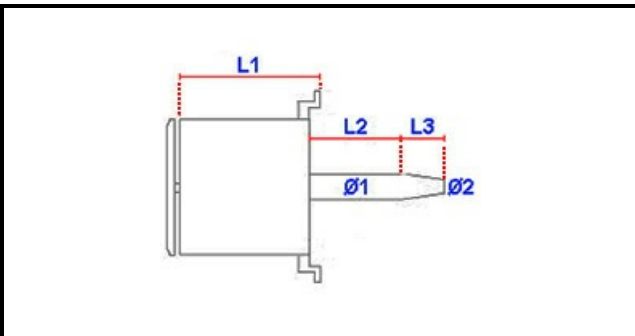
1103939

FAN MOTOR 0,25KW 230V 2600rpm 1 SPEED

Date: 22-12-2024



Technical data



MOTOR LENGHT mm	L1=100mm
SHAFT LENGHT 1 mm	L2=37mm
SHAFT LENGHT 2 mm	L3=25mm
SHAFT DIAMETER mm	Ø1=12mm
HP - POWER	HP=0,33
KILOWATT KW	KW=0,25
MONOPHASE	230V
SHAFT DIAMETER 2 mm	Ø2=9mm

Manufacturer code

NIDEC FIR INTERNATIONAL SRL
INOXTREND S.R.L.
INOXTREND S.R.L.