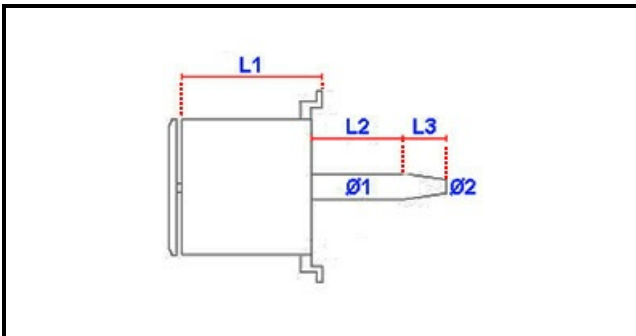


1103957

MOTOR 0,55KW 230V 50/60Hz

Date: 15-11-2024

ORIGINAL
OSP
SPARE PARTS**Technical data**

MOTOR LENGHT mm	L1=170mm
SHAFT LENGHT 1 mm	L2=66mm
SHAFT LENGHT 2 mm	L3=47mm
SHAFT DIAMETER mm	Ø1=24mm
KILOWATT KW	KW=0,055
MONOPHASE	230V
CAPACITOR	20 mF
SHAFT DIAMETER 2 mm	Ø2=20mm

Manufacturer code

LAINOX ALI GROUP SRL A SOCIO UNICO