

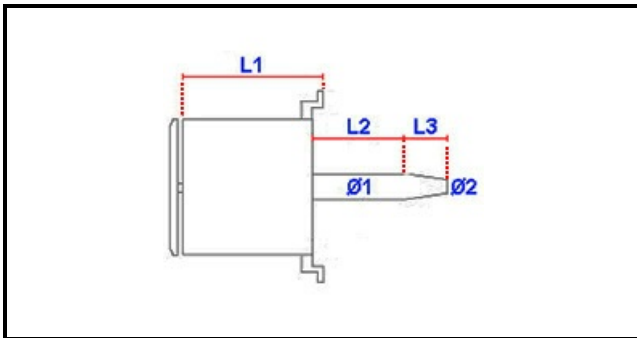
1103978

OVEN MOTOR 2 SPEED 220/240/415V 50Hz 1400/900rpm 0,55Kw 3/1,7A

Date: 23-02-2025

ORIGINAL
OSP
SPARE PARTS

Technical data



MOTOR LENGHT mm	L1=168mm
SHAFT LENGHT 1 mm	L2=49mm
SHAFT LENGHT 2 mm	L3=49mm
SHAFT DIAMETER mm	Ø1=24mm
KILOWATT KW	KW=0,55
THREE PHASE	400V
SHAFT DIAMETER 2 mm	Ø2=20mm

Manufacturer code

NIDEC FIR INTERNATIONAL SRL

NIDEC FIR INTERNATIONAL SRL