

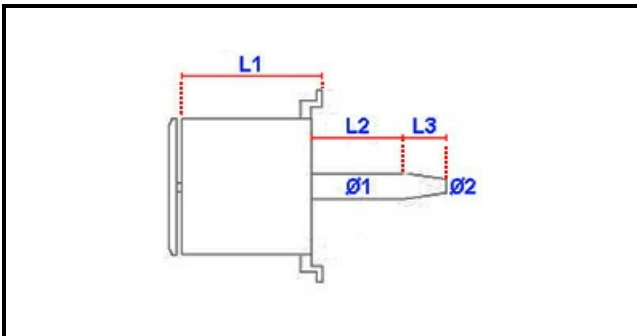
1103996

# FAN MOTOR 0,55KW 230V 50Hz

Date: 05-04-2025



## Technical data



MOTOR LENGHT mm	L1=170mm
SHAFT LENGHT 1 mm	L2=49mm
SHAFT LENGHT 2 mm	L3=48mm
SHAFT DIAMETER mm	Ø1=24mm
HP - POWER	HP=0,75
KILOWATT KW	KW=0,55
MONOPHASE	230V
CAPACITOR	16 mF
SHAFT DIAMETER 2 mm	Ø2=20mm

## Manufacturer code

NIDEC FIR INTERNATIONAL SRL