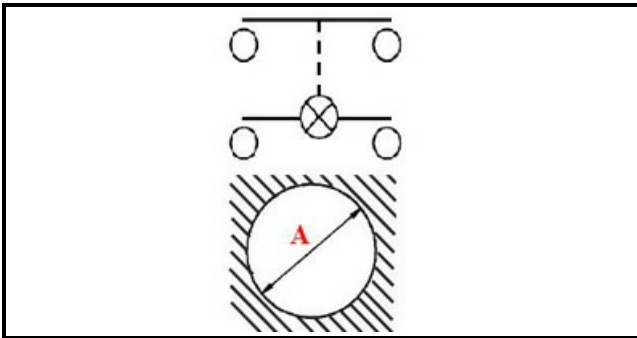


1105033

RED BIPOLAR LUMINOUS SWITCH 16A 230V D25

Date: 05-03-2025

**Technical data**

DIAMETER mm	Ø=25mm
NUMBER OF POLES	POLI/POLES=4
NUMBER OF POSITIONS	0-1
COLOR	ROSSO/RED
VOLT	230V