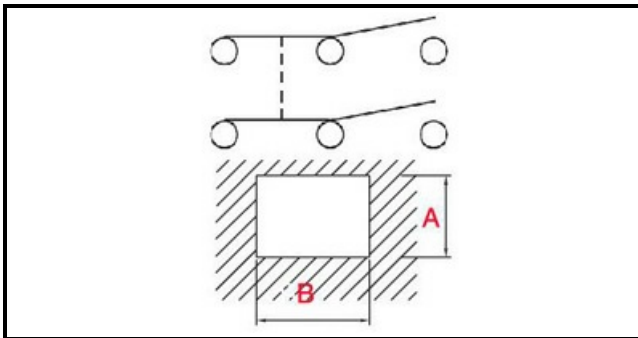


1105306

SWITCH FOR SLICER

Date: 15-11-2024

**Technical data**

DEPTH MM	B=28mm
WIDTH MM	A=22mm
NUMBER OF POLES	POLI/POLES=6
NUMBER OF POSITIONS	0-1
COLOR	NERO/BLACK
VOLT	250V
COLOR	BIANCO/WHITE