

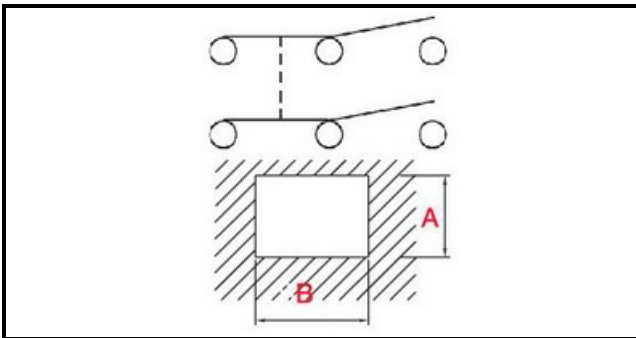
1105320

OVERCURRENT PROTECTOR SWITCH

Date: 23-02-2025

ORIGINAL
OSP
SPARE PARTS

Technical data



DEPTH MM	B=36mm
WIDTH MM	A=34mm
NUMBER OF POLES	POLI/POLES=6
NUMBER OF POSITIONS	0-1
COLOR	BIANCO/WHITE
VOLT	15V

Manufacturer code

DITTING MASCHINEN AG