

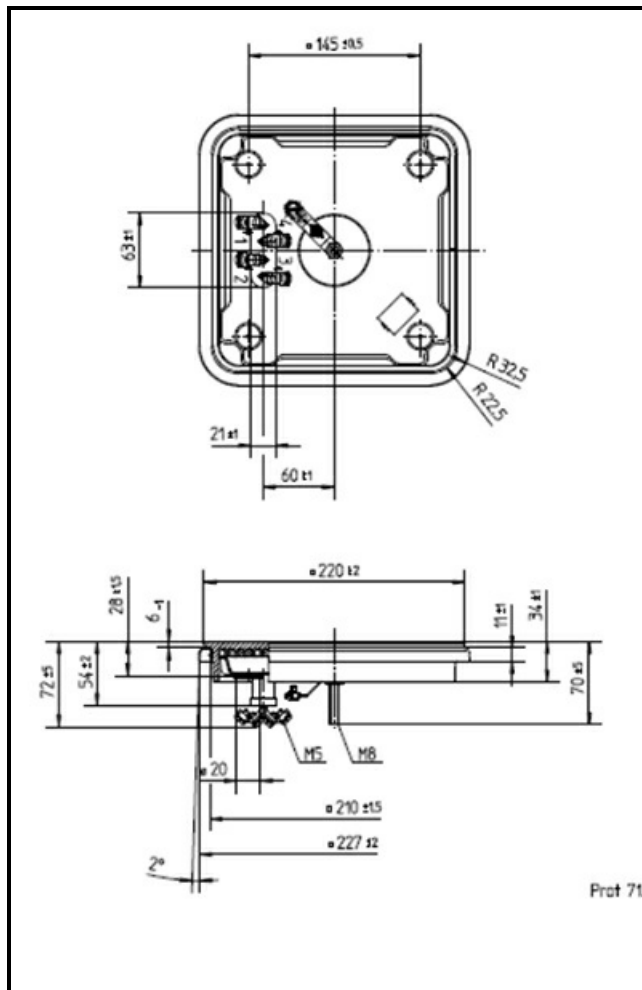
1101896

# PIASTRA ELETTRICA 220x220mm 2600 W 400 V

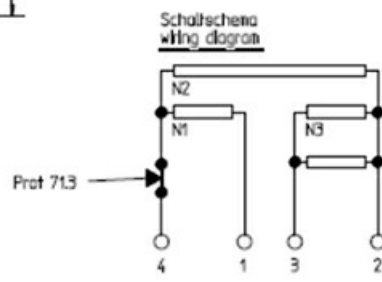
Data: 23-02-2025



## Dati tecnici



LUNGHEZZA MM	A=220mm
LARGHEZZA MM	B=220mm
KILOWATT KW	KW=2,6
WATT	WATT=2600
TRIFASE	TRIFASE/THREEPHASE
RESISTENZE A SECCO	SECCO/DRY



**Codici produttore**

ELECTROLUX PROFESSIONAL S.P.A.
--------------------------------

ANGELO PO GRANDI CUCINE SPA
-----------------------------

OLIS ALI GROUP SRL A SOCIO UNICO
----------------------------------

E.G.O. ELEKTRO GERATE AG
--------------------------

LOTUS SPA
-----------